



## **Syllabus: Art of Tea in Japan**

Created By: Akiko Walley, University of Oregon

### **Sample In-class Activity Sheets: Week 3**

#### **Week 3: Tearoom Architecture**

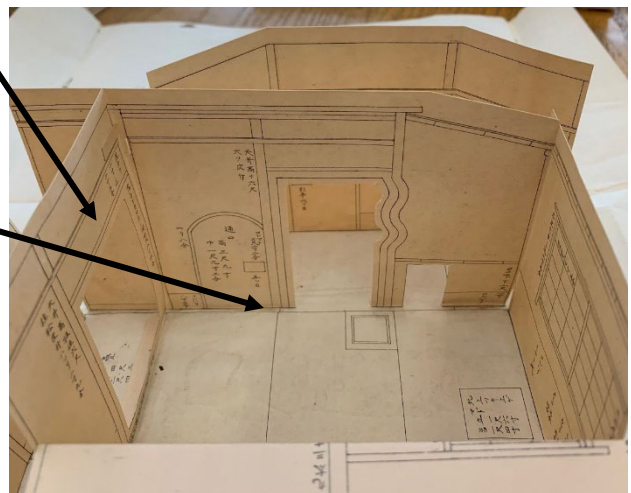
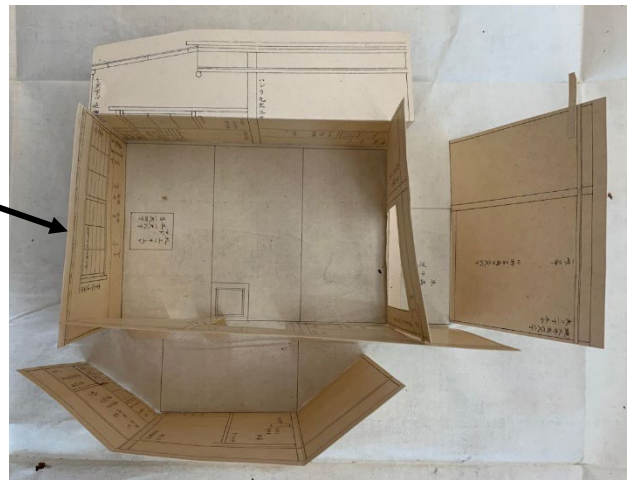
##### **Group tasks:**

1. Study each of the five paper models on the next page and write down the location and orientation of the major architectural elements (*tatami* mats, *nijiriguchi* and any other entrances, windows, alcove, sunken hearth, and host's seat) and your preliminary observations and impressions of the tearoom space.
2. Exchange contact information and decide on your "progress tracking method." Inform Prof. Walley of your tracking method before the end of the class.

## How to read 3-dimensional paper models (*okoshi-ezu*)\*

\*Refer to the Nishi & Hozumi reading and use the appropriate architectural terms.

1. Look for the *nijiriguchi* (which will look like a square door on one of the exterior walls).
2. Locate the windows and identify their types (exposed wattle? bamboo grill? something else?).
3. Count the number of *tatami* mats and list their orientation (to the right, see an example of a 3 ½ -mat room). Remember a *tatami* mat serves as a module.
4. Where is the sunken hearth? (Look for the double square on a *tatami* mat.)
5. What is the *tokonoma*'s shape and size? (Look for an opening framed by walls; can you see a "床" character?)
6. Where will the host enter and sit? Is there a designated area for the host (*daime*)? What are the notable features of the "curtain wall" (*sodekabe*)?
7. List any other notable design details (e.g. *tokobashira*, other wooden details, washing storage; is there a separate serving entrance, etc.)?



Based on your observations of the above seven points, what are your observations about the difference in the host-guest relationship and guests' engagement with objects among the five tearooms? Which one do you think might suit best the theme and atmosphere of the "Maccha Studio" your group chose?